



Table with a solid wood top in glued lists, with straight sides, in combination with U-shaped iron legs with visible weld joints.

STANDARD VERSION: NATURAL IRON BASE, OILED (B1)

CODE	SIZE	A1	A2	A3	A4	A5
3.56.1	W.200 x D.100 x H.75	■	■	■	■	■
3.56.2	W.220 x D.100 x H.75	■	■	■	■	■
3.56.3	W.240 x D.100 x H.75	■	■	■	■	■
3.56.4	W.260 x D.100 x H.75	■	■	■	■	■
3.56.5	W.280 x D.100 x H.75	■	■	■	■	■
3.56.6	W.300 x D.100 x H.75	■	■	■	■	■

AVAILABLE FINISHES:

- A1:** walnut without knots, walnut with knots, elm
A2: oak without knots, oak with knots, cherry, maple
A3: oak without knots finish: whitened, mystic black, vintage, neutro
oak with knots finish: whitened, mystic black, vintage, neutro
A4: oak without knots pigmented: ash grey, white milk, total black
oak with knots pigmented: ash grey, white milk, total black
A5: oak: flamed london, with knots vulcano, with knots tabacco

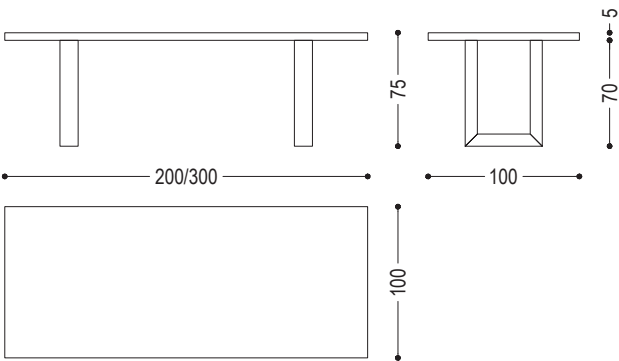
FEASIBILITY LACQUERED IRON BASE	
B2	■
B3	■

AVAILABLE FINISHES:

- B2:** lacquered iron: matt transparent, irondust, RAL (only selected colours)
B3: lacquered iron matt brushed effect: aged copper, aged bronze, stainless steel, titanium
lacquered iron oxidised effect

SHERWOOD SQUARED

DETAIL: TOP WITH SQUARED SIDES



SHERWOOD SQUARED | AVAILABLE FINISHES

WOOD

A1



walnut without knots



walnut with knots



elm

A2



oak without knots



oak with knots



cherry



maple

A3



oak without knots finish:
whitened



oak without knots finish:
mystic black



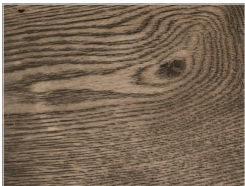
oak without knots finish:
vintage



oak without knots finish:
neutro



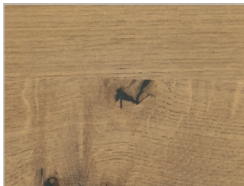
oak with knots finish:
whitened



oak with knots finish:
mystic black



oak with knots finish:
vintage



oak with knots finish:
neutro

A4



oak without knots pigmented:
ash grey



oak without knots pigmented:
white milk



oak without knots pigmented:
total black



oak with knots pigmented:
ash grey



oak with knots pigmented:
white milk



oak with knots pigmented:
total black

A5



oak:
flamed london

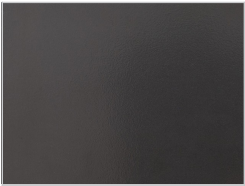



oak:
with knots vulcano



oak:
with knots tabacco

IRON

B2					
	lacquered iron: matt transparent	lacquered iron: irondust			
					
	ferro laccato: RAL - 1013_OYSTER WHITE	ferro laccato: RAL - 3020_TRAFFIC RED	ferro laccato: RAL - 7035_LIGHT GREY	ferro laccato: RAL - 7037_DUSTY GREY	ferro laccato: RAL - 8019_GREY BROWN
					
	ferro laccato: RAL - 9001_CREAM WHITE	ferro laccato: RAL - 9002_GREY WHITE	ferro laccato: RAL - 9005_JET BLACK	ferro laccato: RAL - 9010_PURE WHITE	ferro laccato: RAL - 9016_TRAFFIC WHITE
B3					
	lacquered iron, matt brushed effect: aged copper	lacquered iron, matt brushed effect: aged bronze	lacquered iron, matt brushed effect: stainless steel	lacquered iron, matt brushed effect: titanium	lacquered iron, oxidised effect