



Table with solid wood top in glued lists, with moulded sides. Base with double central leg, positioned lengthways.

STANDARD VERSION: NATURAL IRON BASE , MATT TRANSPARENT LACQUERED (B2)

CODE	SIZE	A1	A2	A3	A4
TOLA 1	W.200 x D.90 x H.74	■	■	■	■
TOLA 2	W.220 x D.100 x H.74	■	■	■	■
TOLA 3	W.240 x D.100 x H.74	■	■	■	■
TOLA 4	W.260 x D.100 x H.74	■	■	■	■
TOLA 5	W.280 x D.100 x H.74	■	■	■	■
TOLA 6	W.300 x D.100 x H.74	■	■	■	■

AVAILABLE FINISHES:

A1: walnut without knots, walnut with knots, elm

A2: oak without knots, oak with knots, cherry, maple

A3: oak without knots finish: whitened, mystic black, vintage, neutro

oak with knots finish: whitened, mystic black, vintage, neutro

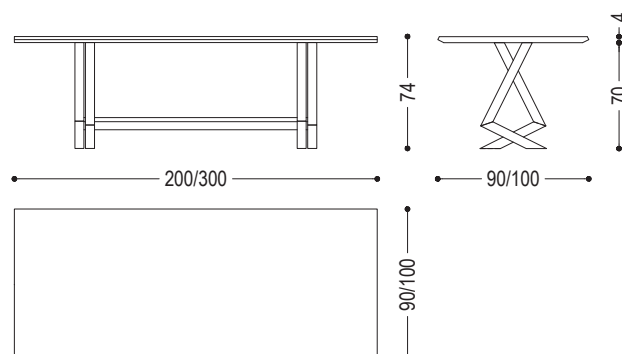
A4: oak without knots pigmented: ash grey, white milk, total black

oak with knots pigmented: ash grey, white milk, total black

FEASIBILITY LACQUERED IRON BASE	
B2	■

AVAILABLE FINISHES:

B2: lacquered iron: matt transparent, iron dust, RAL (only selected colours)



WOOD

A1



walnut without knots



walnut with knots



elm

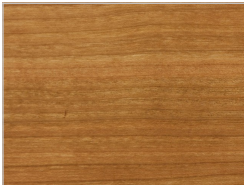
A2



oak without knots



oak with knots



cherry



maple

A3



oak without knots finish:
whitened



oak without knots finish:
mystic black



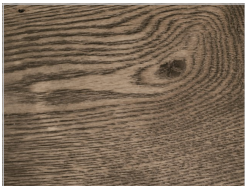
oak without knots finish:
vintage



oak without knots finish:
neutro



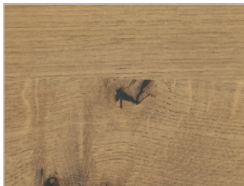
oak with knots finish:
whitened



oak with knots finish:
mystic black



oak with knots finish:
vintage



oak with knots finish:
neutro

A4



oak without knots pigmented:
ash grey



oak without knots pigmented:
white milk



oak without knots pigmented:
total black



oak with knots pigmented:
ash grey



oak with knots pigmented:
white milk



oak with knots pigmented:
total black

IRON

B2					
	lacquered iron: matt transparent	lacquered iron: iron dust			
					
	ferro laccato: RAL - 1013_OYSTER WHITE	ferro laccato: RAL - 3020_TRAFFIC RED	ferro laccato: RAL - 7035_LIGHT GREY	ferro laccato: RAL - 7037_DUSTY GREY	ferro laccato: RAL - 8019_GREY BROWN
					
	ferro laccato: RAL - 9001_CREAM WHITE	ferro laccato: RAL - 9002_GREY WHITE	ferro laccato: RAL - 9005_JET BLACK	ferro laccato: RAL - 9010_PURE WHITE	ferro laccato: RAL - 9016_TRAFFIC WHITE